

STANDARD DEPARTURE CHART -
INSTRUMENT (SID)
RNAV 1 (GNSS)

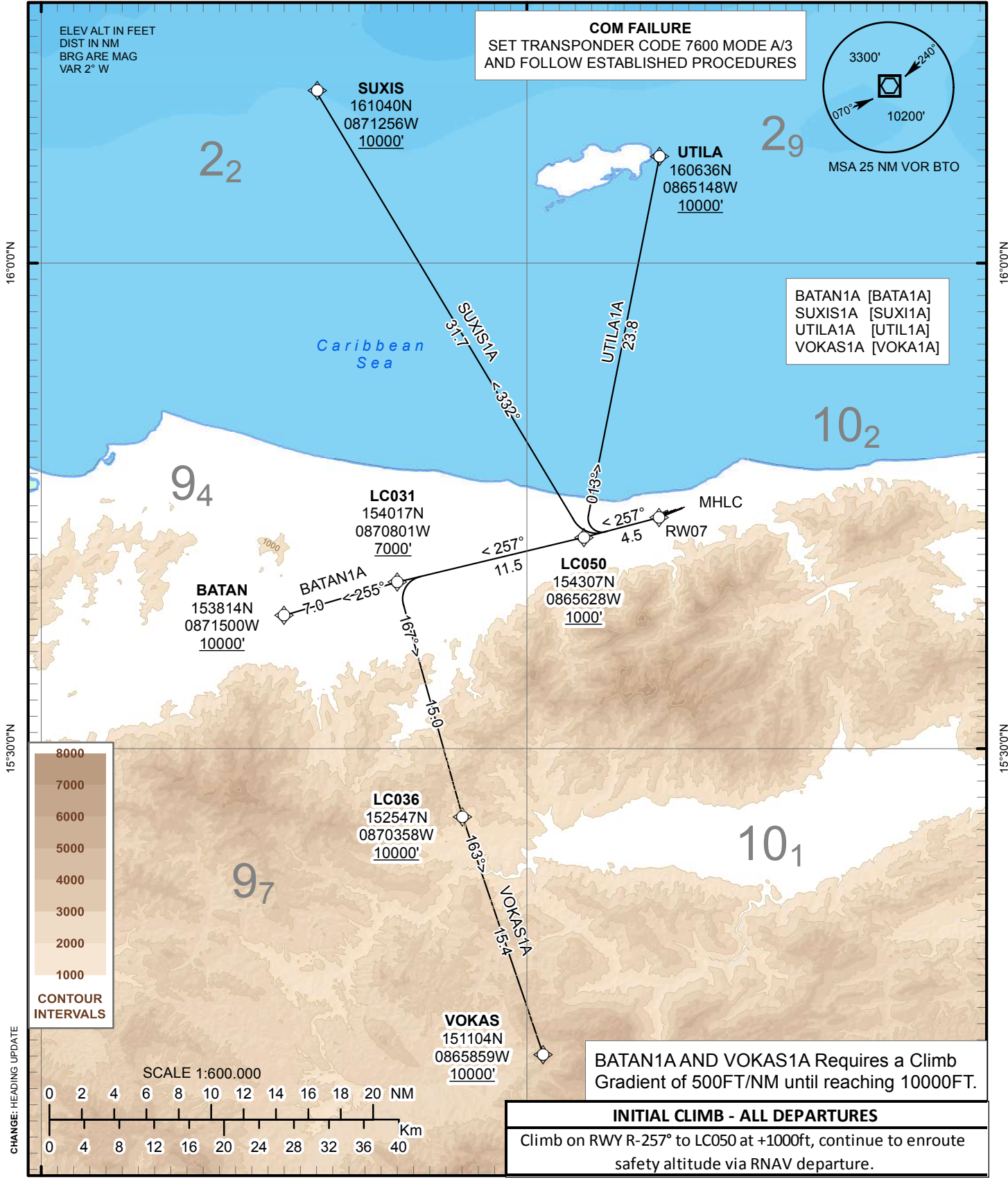
TRANSITION ALTITUDE
19000 FT

TWR 118.5 GND 121.9
RDO 128.9 ATIS 127.80

LA CEIBA / GOLOSON INTL
RNP RWY 25
BATAN1A SUXIS1A
UTILA1A VOKAS1A

87°30'0"W

87°0'0"W



87°30'0"W